

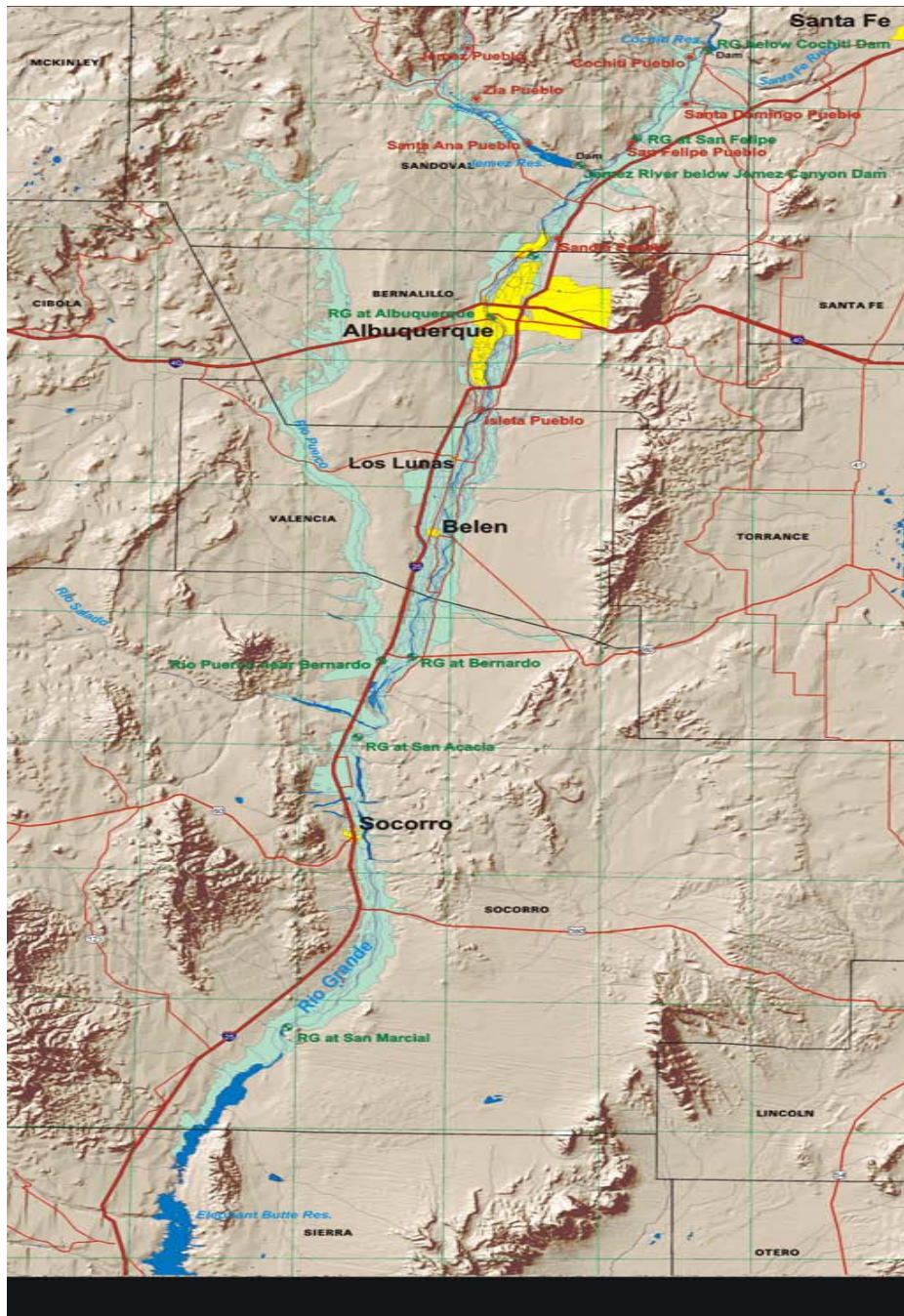


*Understanding the Middle Valley
Apportionment Under the Rio Grande
Compact and Associated Challenges*

Kevin Flanigan

New Mexico Interstate Stream
Commission

April 26, 2006



The Middle Rio Grande Basin in New Mexico

Water Supplies Available to Middle Valley

- Native Rio Grande Inflow at Otowi
- Tributary Inflow
- Groundwater Storage
- San Juan-Chama Project Water

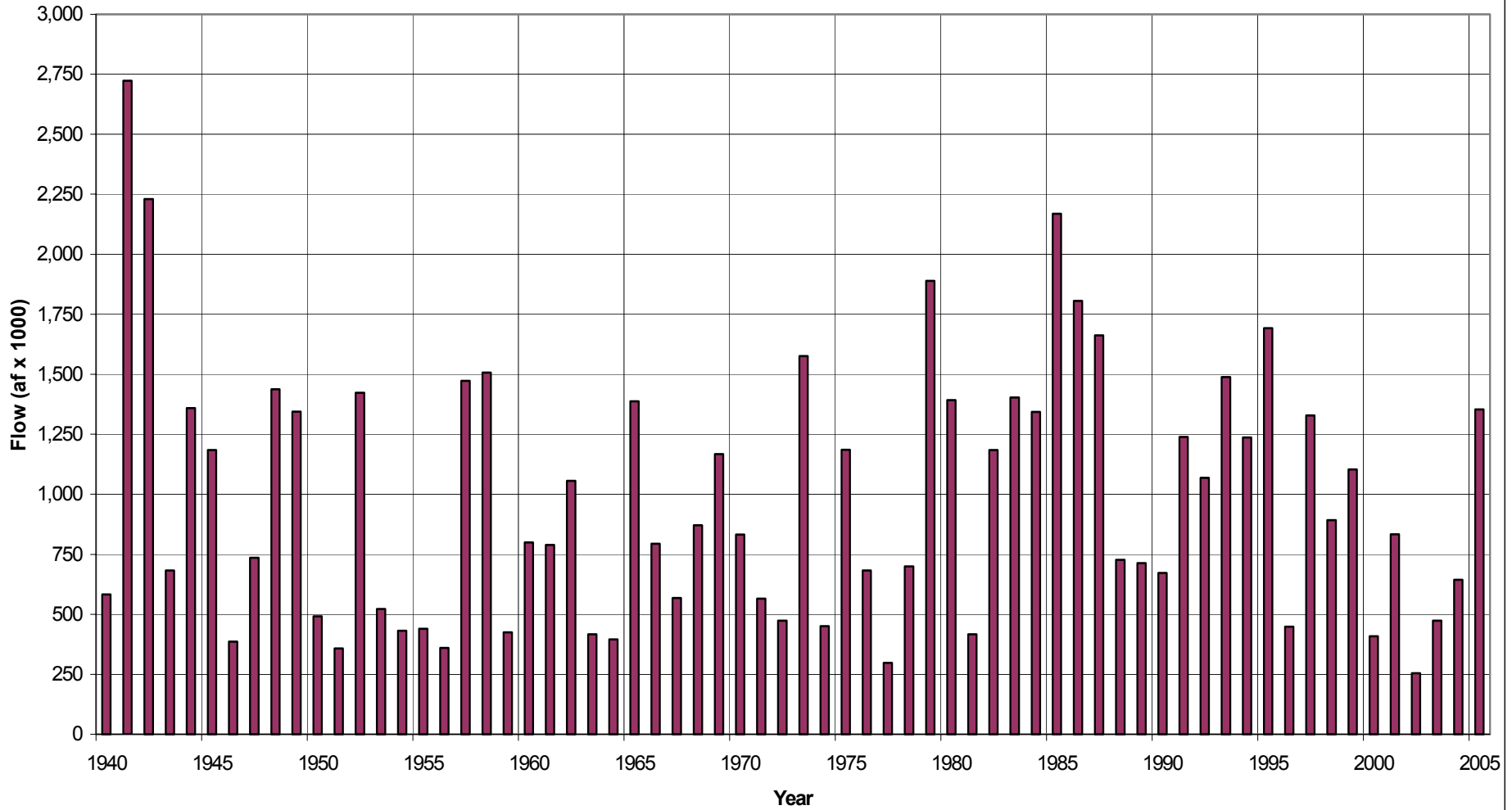
Otowi Gage



INTERSTATE
STREAM
COMMISSION



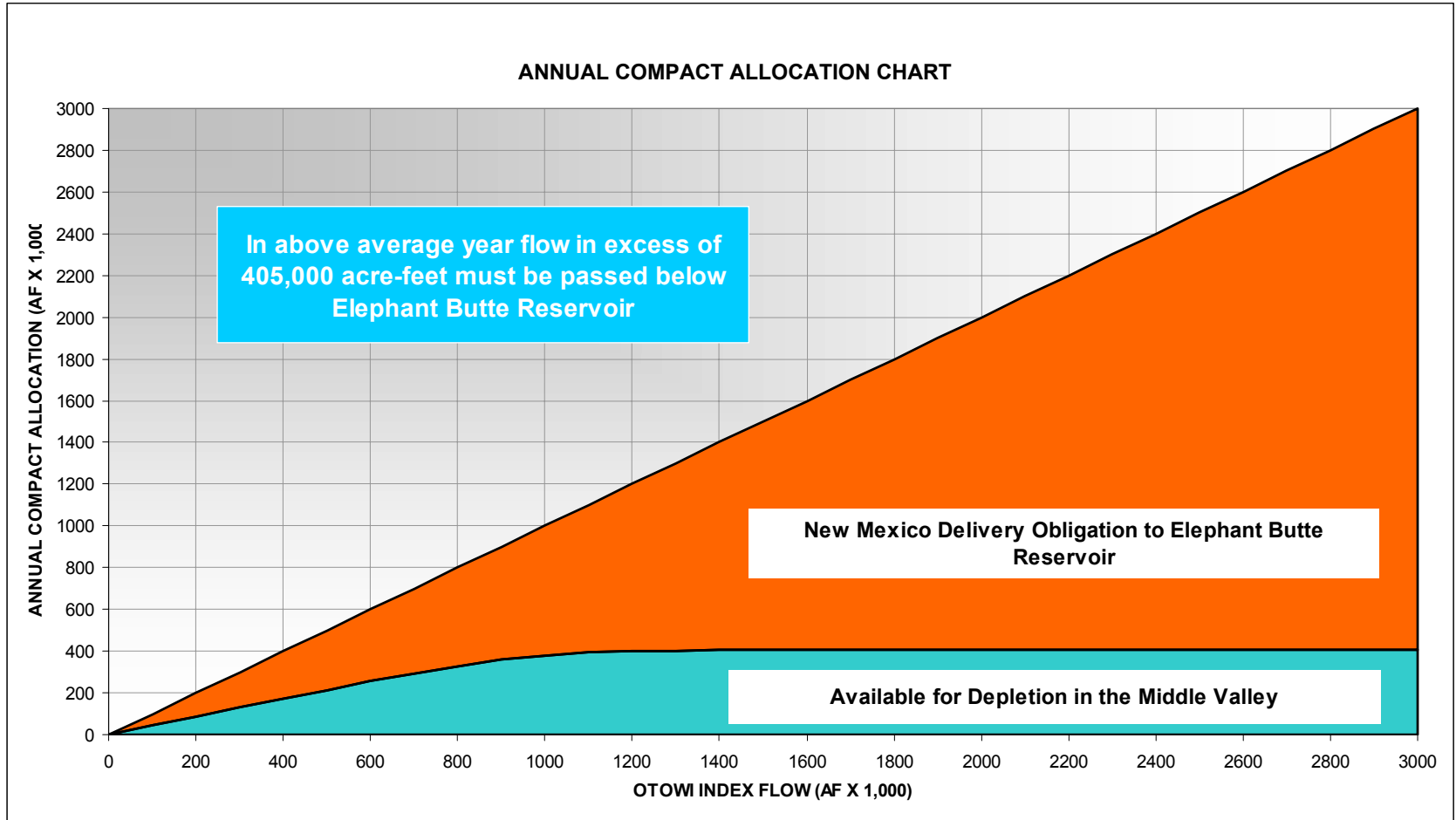
Otowi Index Supply



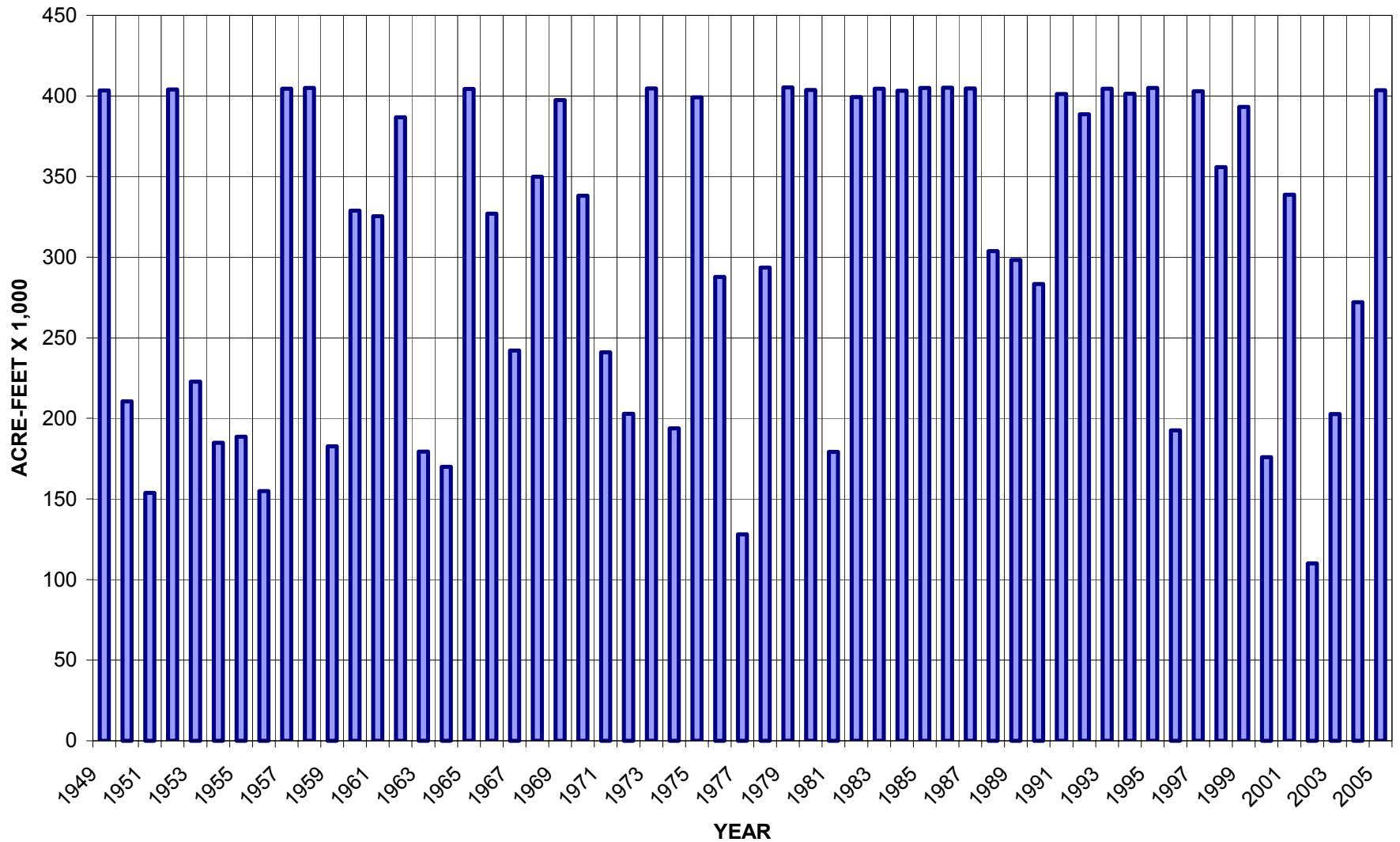
Rio Grande Compact



**INTERSTATE
STREAM
COMMISSION**

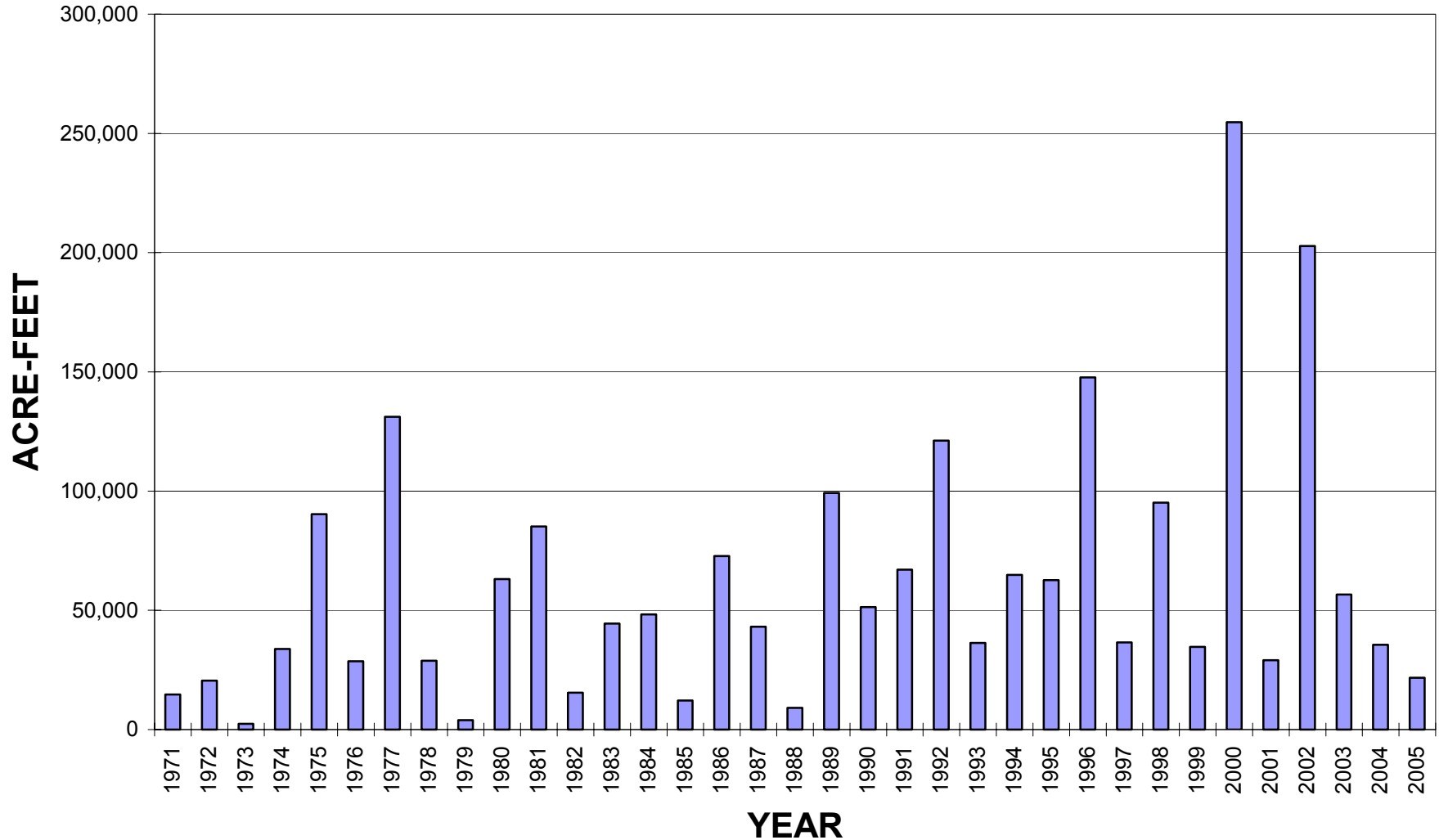


OTOWI INFLOW AVAILABLE FOR DEPLETION IN MIDDLE VALEY





SAN JUAN-CHAMA WATER AT OTOWI





HISTORIC FATE OF SAN JUAN-CHAMA WATER IN THE MIDDLE VALLEY

- MRGCD
- Offset Municipal Pumping Effects on River
- Leased by United States to Provide Supplemental Flows for Endangered Silvery Minnow
- Routed to Storage in Elephant Butte Reservoir
- Leased by Interstate Stream Commission for Jemez Canyon Reservoir Sediment Pool

Elephant Butte Dam and Reservoir



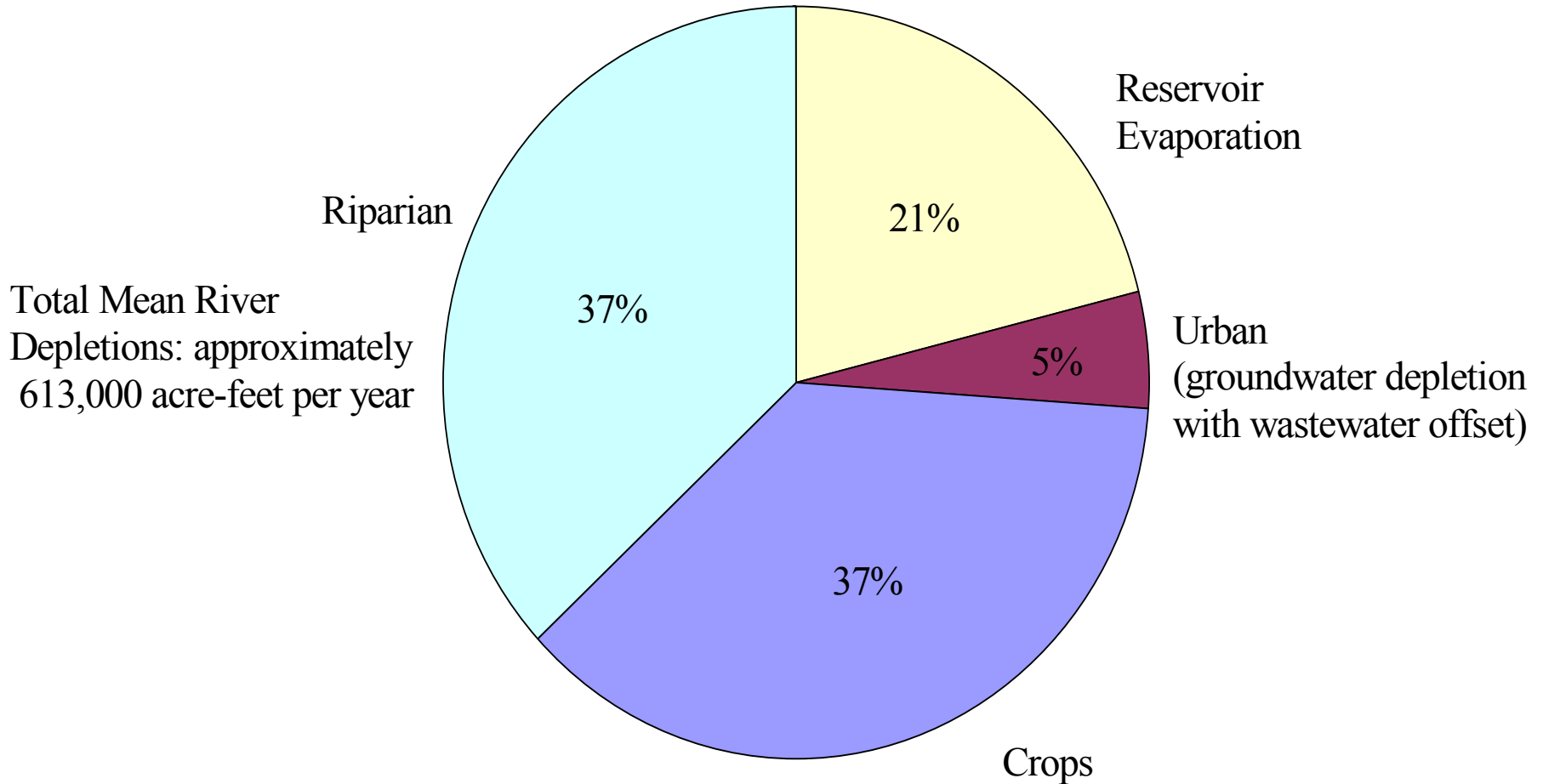
**INTERSTATE
STREAM
COMMISSION**



MRG River System Depletions

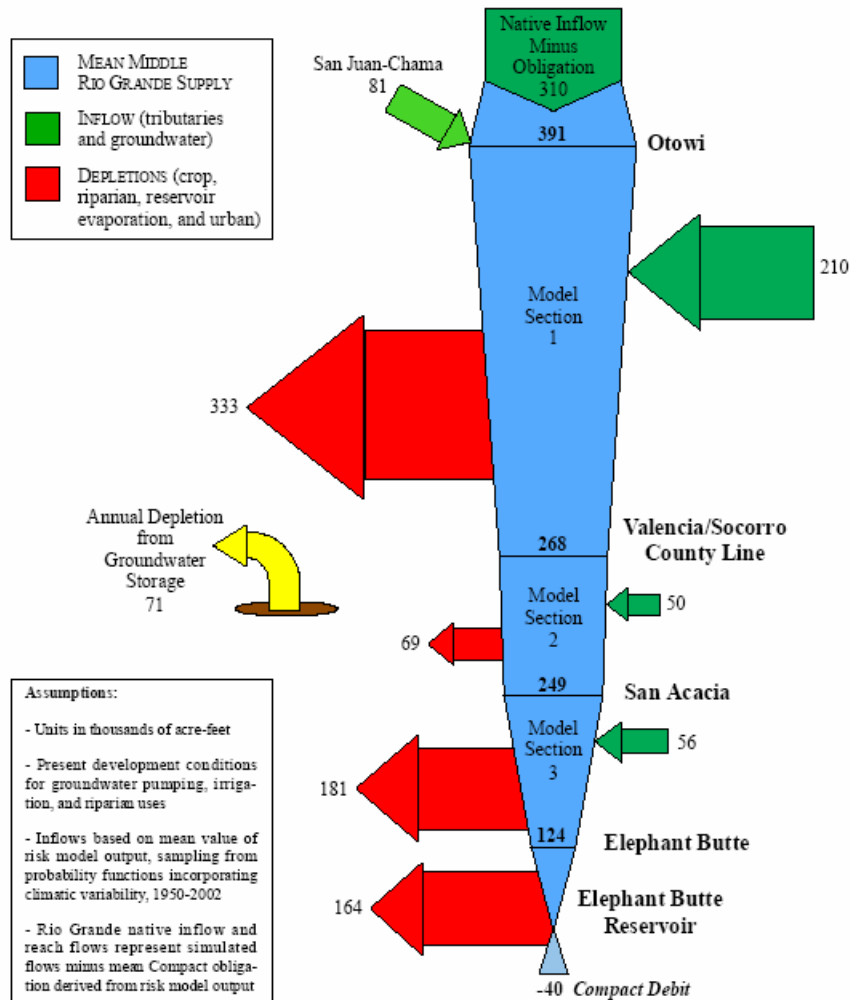


INTERSTATE
STREAM
COMMISSION



Source: SSPA, July 2000 Water Supply Study of the Middle Rio Grande

Figure 4.21
Mean Annual Middle Rio Grande Water Supply
Present Development Condition





- Supplemental Flow Requirements for Endangered Species
- Habitat Restoration Activities
- Delayed River Depletions from Historic and Current Groundwater Pumping
- Increased Depletions Resulting from Growing Demand for Urban Growth and Economic Development
- Increased Use of San Juan-Chama Project Water

State Efforts to Increase Available Supply



17 3:03





POSSIBLE KEYS TO THE PUZZLE

- Priority Administration ?
- Active Water Resource Management ?
- Shortage Sharing and Consensus Plans ?
- Innovative State-Federal Agreements
 - Conservation Water Agreement (2001)
 - Emergency Drought Water Agreement (2003)



POSSIBLE KEYS TO THE PUZZLE (CONTINUED)

- Water Markets ?
- Water Conservation ?

ACTUAL VS. REQUIRED DELIVERIES

